

Reliability Life Cycle Management (RLCM) is a structured reliability approach which encompasses all the key activities needed, from concept development through the start of production, in order to deliver high value & successful products to customers



Why the need for RCLM within your organization?

- Frequency, content, and scope of new product development programs are increasing
 - Rapid Technology change is driving:
 - Increased product complexity and sophistication
 - New functions and features
 - More electronics, software, and diagnostics
- Product Development Cycles are being compressed
- Customers are becoming more demanding and less tolerant
- Competitive and economic pressures require timely launches of new products

Why Fiducia's RLCM's approach has been so successful:

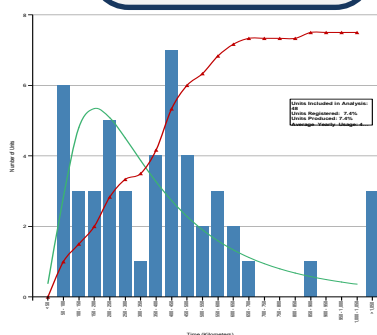
- **Product Development Consulting Experience** – Fiducia has over 20 years of experience in Product Development Consulting
- **Proven Process and Model** – Fiducia's RLCM approach has been executed globally in numerous industrial segments
- **Tactical Partnership** – Fiducia partners with the customer on process execution (not train-and-run)
- **Fiducia Support Software** – Supports the RLCM Process Implementation and assures consistency and accuracy. Plans and manages Reliability programs.

Fiducia's approach to Reliability Management consists of just 8 main steps which can be integrated in to any Product Development Process:

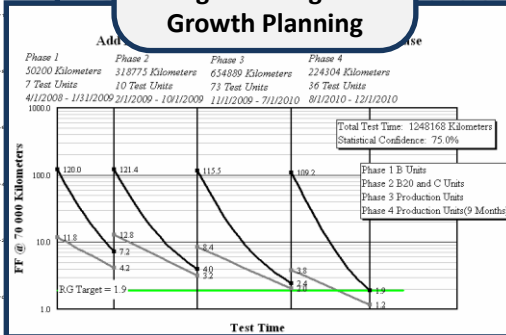
1. **Warranty Analysis** – Analyzes of “baseline” product warranty data
2. **New Content Analysis** – Analyzes changes to new product
3. **Target Setting** – Used to determine product Reliability and Reliability growth targets
4. **Reliability Capability Analysis** – Analyzes mature reliability of new product
5. **Proactive Reliability Planning** – Plan the proactive activities and the reduction of New Content Risk
6. **Proactive Reliability Tracking** – Tracks and manages proactive activities used to reduce New Content Risk
7. **Program Planning** – Used to decide the number of phases in the RG program and the timing, test hours, number of test units, starting point, and end point of each phase
8. **Growth Charting** – Used to plot and analyze predicted versus actual Reliability Growth

RLCM has demonstrated a strong value proposition in the optimization of system validation strategies

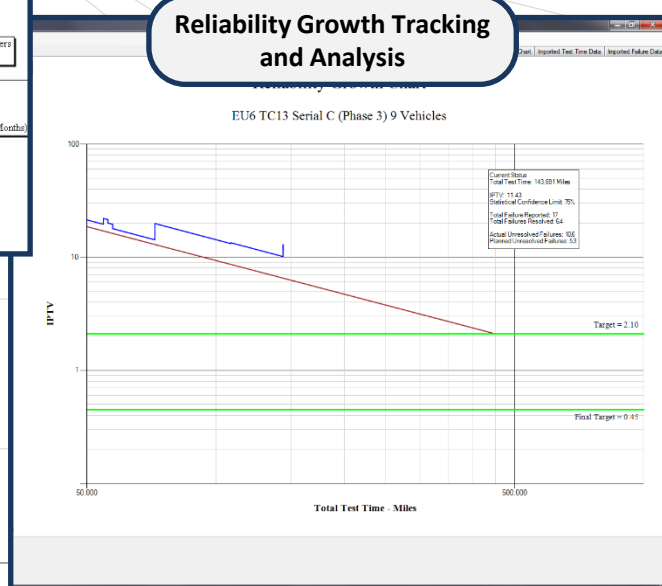
Baseline Warranty Analysis



Target Setting and Growth Planning



Reliability Growth Tracking and Analysis



Fiducia's "RelPath" software helps guide the engineering team through an entire Reliability Program